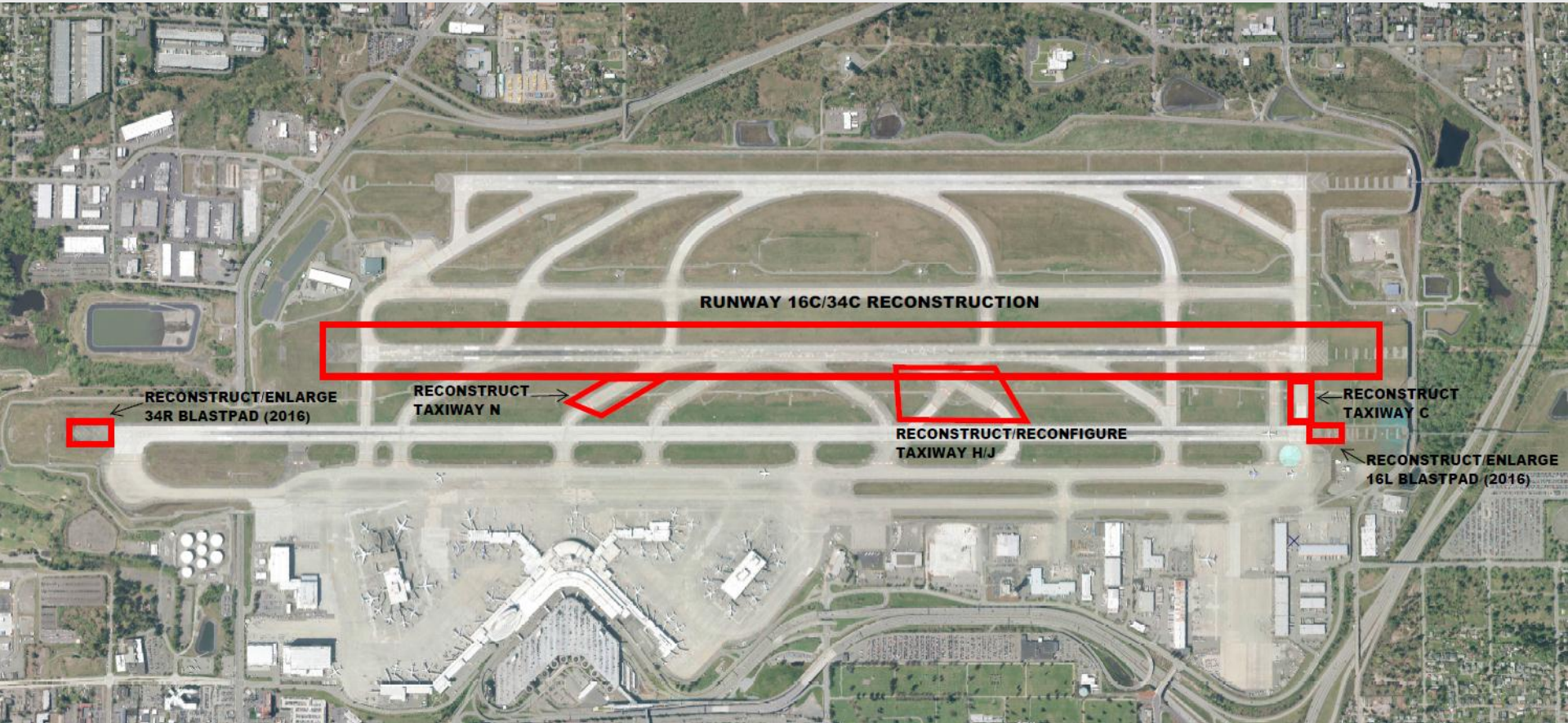


Runway 16Center/34Center (RW 16C/34C) Reconstruction

Seattle-Tacoma
International Airport

Construction Overview

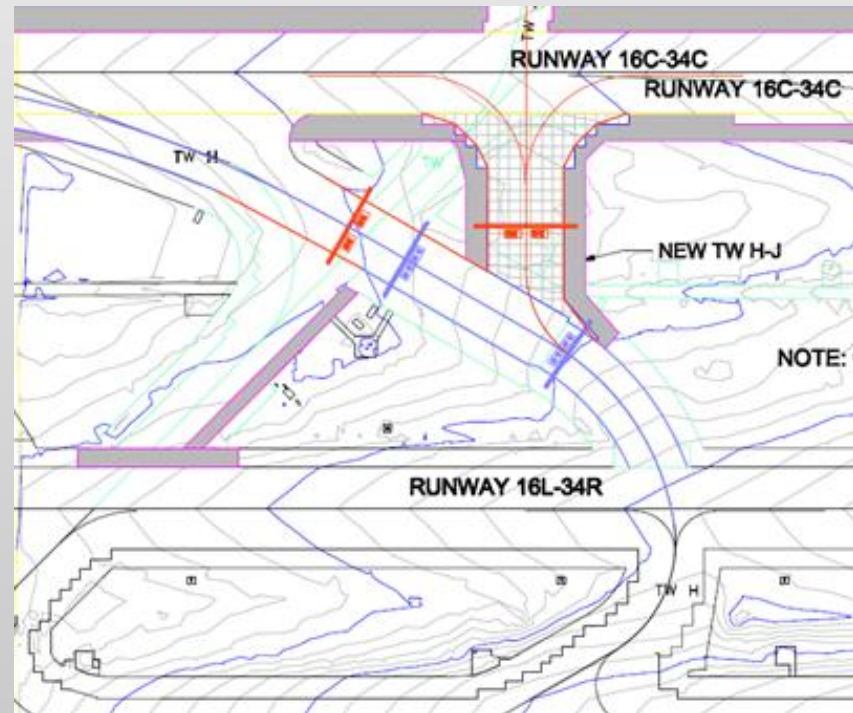
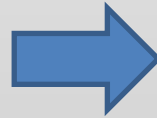


Key Components

- Replace 44-year old runway and two taxiways
- Reconfigure Taxiway H/J
- Reconstruct blast pads to standards for RW 16C/34C and RW 16L/34R
- Install automated FOD detection system
- Install LED lighting and signs
- Replace utilities
- Incorporate water quality enhancement



Taxiway H and J Safety Improvement



Construction Schedule

Task Name	2 nd Quarter			3 rd Quarter			4 th Quarter			1 st Quarter			2 nd Quarter			3 rd Quarter				
	2015										2016									
	Apr	May	Jun	Jul	Aug	Sep	Oct	Nov	Dec	Jan	Feb	Mar	Apr	May	Jun	Jul	Aug	Sep	Oct	
Notice To Proceed	◆																			
RW 16C/34C Closure																				
RW 16L/34R Closure																				
Project Completion																			◆	



Previous Reconstruction Project

RW 16L/34R

